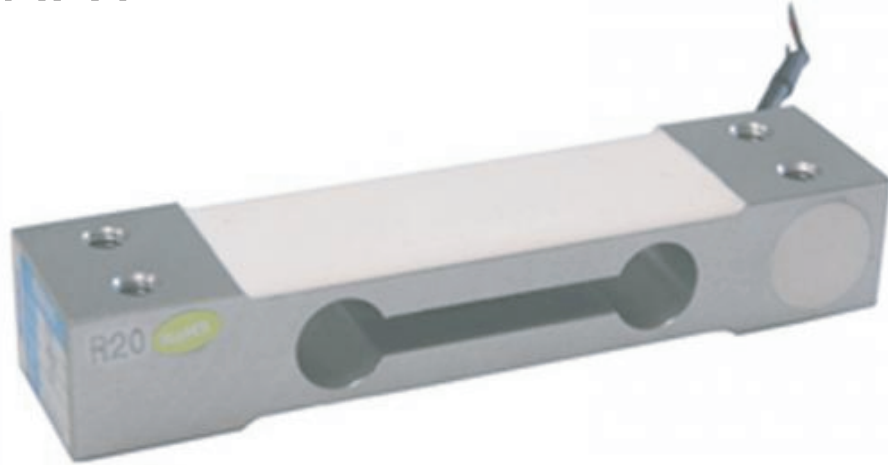


NA1



Low Profile Single Point Load Cell Aluminum Sensor NA1

NA1 is a low profile single point load cell with aluminum construction and Surface anodized, suitable for a wide range of retail scales. This single point parallel beam load cell is available in the capacities: 3, 6, 10, 20, 35, 50 kg.

Item NO.:NA1

- Product Origin: China
- Shipping Port: Xiamen
- Payment: 100% payment before shipment
- Capacities: 3, 6, 10, 15, 20, 35 kg
- Material: Aluminum Alloy
- Dimension: 130*30*22mm
- Rated Output: 2.0mV/V
- Protection Class: IP66/IP67

Product Details

Low Profile Load Cell NA1 (3-50kg)

NA1 is a low profile single point load cell with aluminum construction and surface anodized, suitable for a wide range of retail scales. This single point parallel beam load cell is available in the capacities: 3, 6, 10, 20, 35, 50kg.

Distribuidor Autorizado: **INGEMATIC CIA LTDA**

Fijo: +593 2 2550342 Móvil: +593 98 635 3635 / +593 99 830 8818

Email: info@ingematic.net

Quito - Ecuador

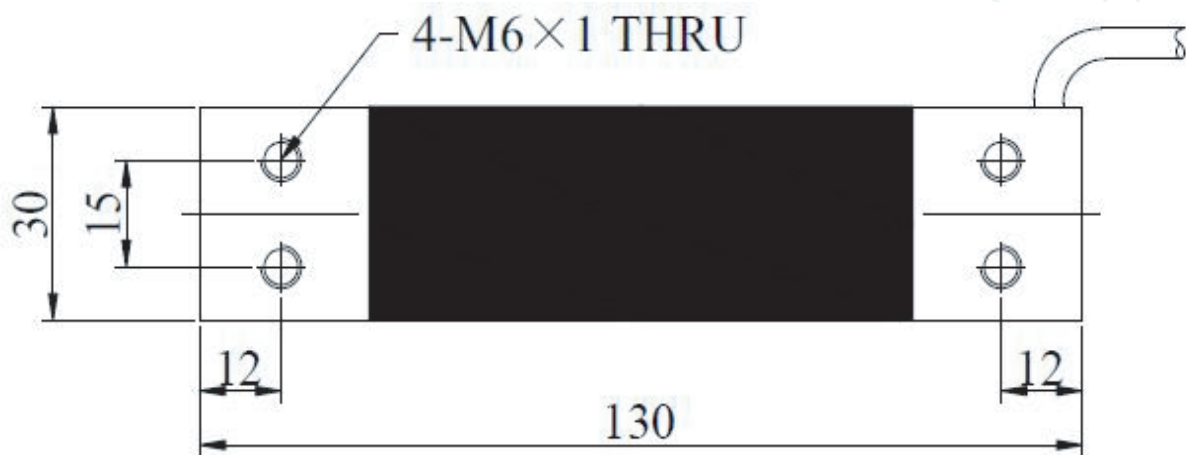
Key Features:

- High accuracy OIML approved
- Calibrated to national standards
- Aluminum alloy construction
- Compact Design
- Easy to install
- Long term, reliable operation

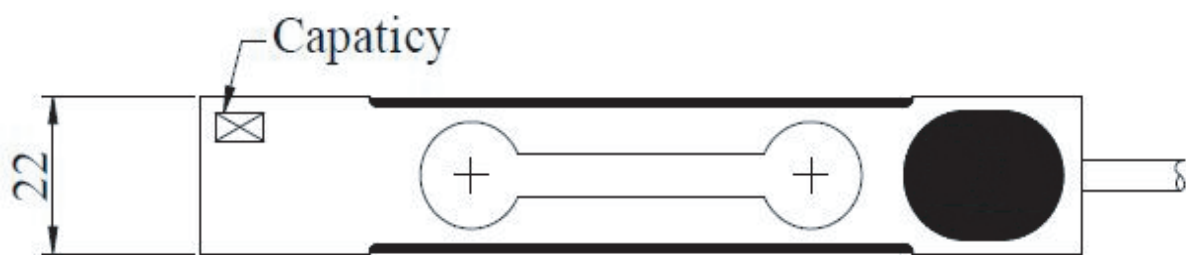
Usage & Applications:

- Price computing scales
- counting scales
- weighing scales
- retail scales

Dimension



俯视 (Top View)



主视 (Front View)

NA1 Specification

Rated Capacities	3, 6, 10, 15, 20, 35 kg
Rated Output	2.0 mV/V \pm 10%
Zero Balance	\pm 0.0200 mV/V
Non-linearity	0.02 %R.O.
Hysteresis	0.02 %R.O.
Repeatability	0.02 %R.O.
30mins Creep	0.02 %R.O.
30mins Return	0.02 %R.O.
Safe Overload	150 %R.O.
Ultimate Overload	200 %R.O.
Temperature Effect On Output	0.002 %R.O./ $^{\circ}$ C
Temperature Effect On Zero	0.003 %R.O./ $^{\circ}$ C
Input Impedance	410 \pm 15 Ω ; 1130 \pm 30 Ω
Output Impedance	350 \pm 5 Ω ; 1000 \pm 10 Ω
Insulation Impedance	\geq 5000 M Ω /(50VDC)
Recommended Excitation	5~12 VDC
Maximum Excitation	15 VDC
OperatingTemperatureRange	-20~60 $^{\circ}$ C
Construction	Aluminum Alloy
Protection Class	IP66 / IP67
Cable	ϕ 4 \times 0.5m
Recommended Platform Size	350 \times 350 mm
Mode of Connection	Red (EXC+), Black (EXC-), Green (SIG+),White SIG-

Distribuidor Autorizado: **INGEMATIC CIA LTDA**

Fijo: +593 2 2550342 Móvil: +593 98 635 3635 / +593 99 830 8818

Email: info@ingematic.net

Quito - Ecuador



www.ingematic.net